

Communications Module

Allows connection to an entire network of Syncro control panels to remotely investigate faults and retrieve system information. Before committing to costly call-outs, customers can be advised on the exact status of their system at any time providing peace of mind and confidence in the service company.

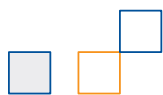


Features

- View devices near calibration limits
- Plan maintenance visits
- Retrieve event log
- Dial in and observe reported faults
- Assist commissioning from remote location
- Offer value added service to customers
- Check software version to see if updates are available
- Retrieve configuration
- Avoid unnecessary call outs
- Simple to install

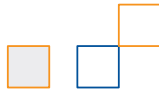
Product Overview

- The S556 communications module enables service companies to interrogate control panels remotely via a telephone link.
- The communications module is simple to install and requires a PSTN telephone line.
- The module mounts on existing pillars in the control panel and is supplied with all wiring and connections to enable speedy installation and commissioning.
- Once connected to the control panel via the Loop Explorer software, users can upload configuration data and event logs or take control of the system via the virtual panel interface. This allows the panel controls to be operated as if the user was standing at the panel.
- The Loop Explorer configuration programme (version 3.0 or higher) is used to dial into control panels but the dial up facility will not be available unless the PC calling the control panel is fitted with a registered dongle (part number B2158 for parallel port or B2158USB for USB version).



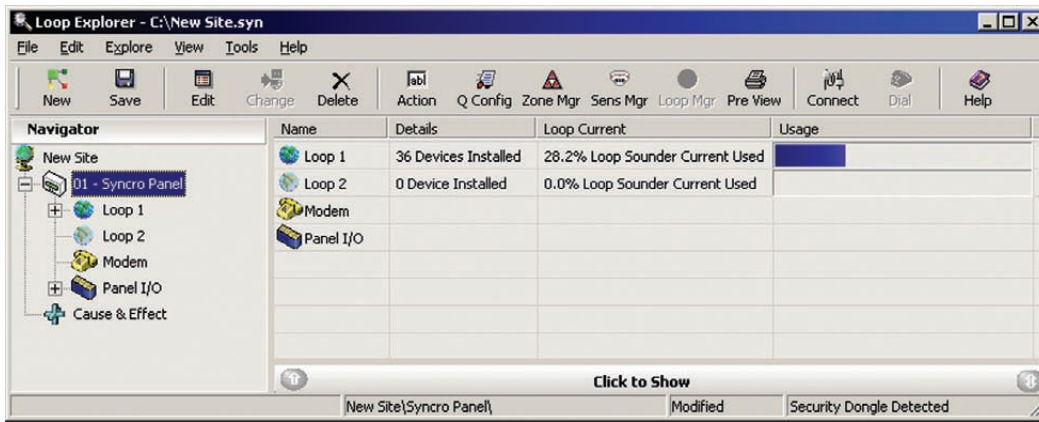
Specifications

DS31.04.2006



Technical

- Module part number - S556P (PSTN)
- Size - 190mm x 62mm x 40mm
- Supply voltage - 21V to 30V DC
- Current consumption - 50 milliamps
- Connection - PSTN
- Dongle part number - B2158 (parallel port)
B2158USB (USB serial port)

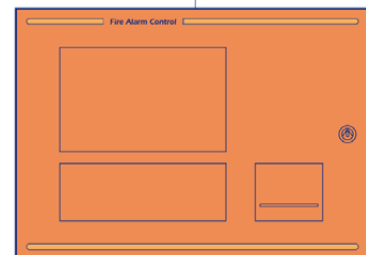


NOTE: The Communications Module is compatible with Loop Explorer Software version 3 or above and Syncro Control Panel version 3 or above.

PC running Loop Explorer Programme & fitted with Dongle



Public Telephone Network



Syncro Control Panel fitted with Communications Module



Certificate No. FM 32987
BS EN ISO 9001: 2000



Certificate No. 360
BS EN ISO 9001: 2000